

# G-SL-3000Y

Sliding Gate Motor without Oil Bath



**RANGER**  
AUTOMATION • REVOLUTION



### Overheating Protection

The motor will be automatically cut off when the temperature reaches the rated value.



### Reliable Turbine and Structure

Turbine worm drive transmission structure with and smooth transmission.



### Safety Auto Shuttering

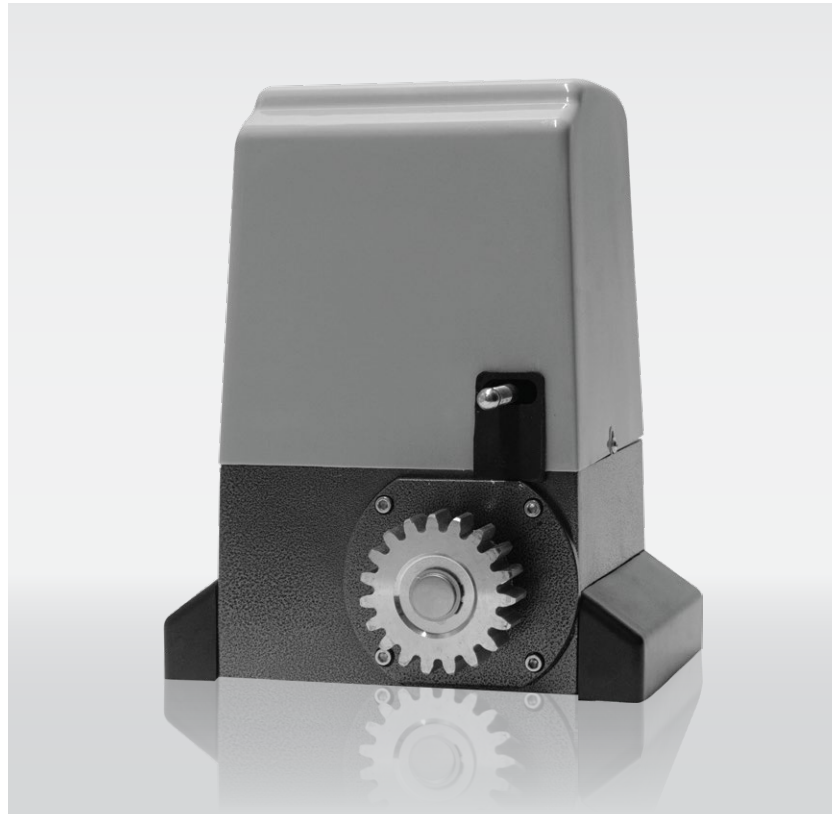
Auto shuttering back the door against touching, soft start and soft stop.



### Convenience Setup

Convenience installation, when power failure can open the clutch, manual opening.

\*All image and specification is subject to change without prior notice.



| Technical Data  | G-SL-3000Y                |
|-----------------|---------------------------|
| Input Voltage   | 220V/50Hz                 |
| Motor Speed     | 1400r/min                 |
| Output Torque   | 22N.m                     |
| Motor Power     | 370W                      |
| Max Gate Weight | 800kg                     |
| Gate Speed      | 12m/min                   |
| Limit Switch    | Spring Limit Switch (N.O) |
| Temperature     | -40°C ~ +65°C             |
| Noise           | ≤56dB                     |
| Gear Teeth      | 19T                       |

### Standard Colours



Grey Aluminium  
(Similar to RAL9007)



Metallic Signal Black  
(Similar to RAL9004)

